

---

# 2024 DEVELOPER CONFERENCE

Working together to build  
an innovative future



**NORTHUMBRIAN**  
**WATER** *living water*

---

# WELCOME AND INTRODUCTION TO THE DAY



**NORTHUMBRIAN**  
**WATER** *living water*

Claire Sharp  
Customer Director



# PURPOSE OF TODAY

**Working together to build  
an innovative future**



**NORTHUMBRIAN  
WATER** *living water*



# SETTING THE SCENE

## General Election

RPTI Planifesto

Economic  
struggles

Environmental  
concerns

AMP8

Levelling up

Water resource demand



# SETTING THE SCENE

NAV market growing

Competition

Deregulation

Developer Measurement of Experience

Environmental protection

AMP8

Schedule 3

Water quality

# AGENDA AND AUDIENCE ENGAGEMENT

A copy of the agenda and information on your speakers can be found on your tables.

## Morning session:

1. External keynote speaker – Hannah Rapson, Vistry Group.
2. Table exercise – Angela Macoscar and NWG Innovation Team.
3. Exhibitor stall browsing.

## Afternoon session:

1. Rotating breakout sessions – Industry experts.
2. Reflections and closing message – Claire Sharp, NWG.
3. Networking and exhibitor stall browsing.

# Vistry Group

## Future Homes Standard, Net Zero and the Vistry Innovation Centre

Hannah Rapson, Group Technical Innovation



# Future Home Standard Update

- Government published the consultation on plans for achieving the Future Homes Standard.
- The consultation has proposed transitional arrangements, new energy efficiency requirements and options to reduce running costs balanced against built costs.

**FHS Option 1**

- Same fabric as AD L 2021
- Heat pump: space and water heating
- PV, dMEV and WWHR
- Heating and hot water bill savings of ~£120 p/yr.
- Carbon of 0.05 tCO<sub>2</sub>e/yr.

**FHS Option 2**

- Same fabric as AD L 2021
- Heat pump: space and water heating
- No PV, dMEV or WWHR
- Increases bills by ~£580 p/yr.
- Carbon of 0.1 tCO<sub>2</sub>e/yr.



Illustration showing 2025 house type



# Transitional Arrangements

- Two transitional options have been proposed:
  - Option 1: 6-month period between the FHS being laid in Parliament and coming into force.
  - Option 2: 12-month period between the FHS being laid in Parliament and coming into force.
- Both options will be followed by a 12-month transition which will be the same as current regulations i.e., plot specific arrangements.
- We estimate the earliest case scenario for existing sites for option 1 is April 2026 and option 2 is October 2026
- However, Vistry estimates **January 2027**

Stage	Timeframe	Option 1: 6 Months	Option 2: 12 Months
Consultation period ends	3 Months	March 2024	March 2024
Government assessment response	3 Months	June 2024	June 2024
Regulations Laid in Parliament	3 Months	October 2024	October 2024
FHS coming into force (On all new sites registered with building Control)	6 or 12 Months	April 2025	October 2025
Transitional arrangement end date (all new plots on all developments)	12 Months	April 2026	October 2026

# Other areas

- **Part O:** Overheating call for evidence
- **Accounting for exceptional circumstances:** Proposal for the ability via a request to the local authority to relax the standards on a local level if deemed unviable
- **Home User Guides:** Proposal that operating and maintenance guidance required for all new technology that must be made available in hard copies and digitally
- **Post occupancy evaluation:** Proposal to introduce voluntary as-built performance tests in homes to validate the energy use of the dwelling
- **Government backed FHS brand:** Proposal to have a Government-endorsed FHS brand that developers can adopt on developments where homes are built to FHS spec
- **On site commissioning:** More thorough checks required to ensure technologies are installed correctly.
- **Part G review and FHH roadmap for water:** Recommendation to reduce consumption to 90l pppd by 2035 – separate from FHS.

# FHH roadmap for future water standards

**2025**

**105 LPPPD**

achieved through fittings approach

**100 LPPPD**

in water stressed areas

**90 LPPPD**

in seriously water stressed areas to enable sustainable growth

**2030**

**100 LPPPD**

achieved through fittings approach and innovation

**90 LPPPD**

in water stressed areas

To be determined in seriously water stressed areas to enable sustainable growth

**2035**

**90 LPPPD**

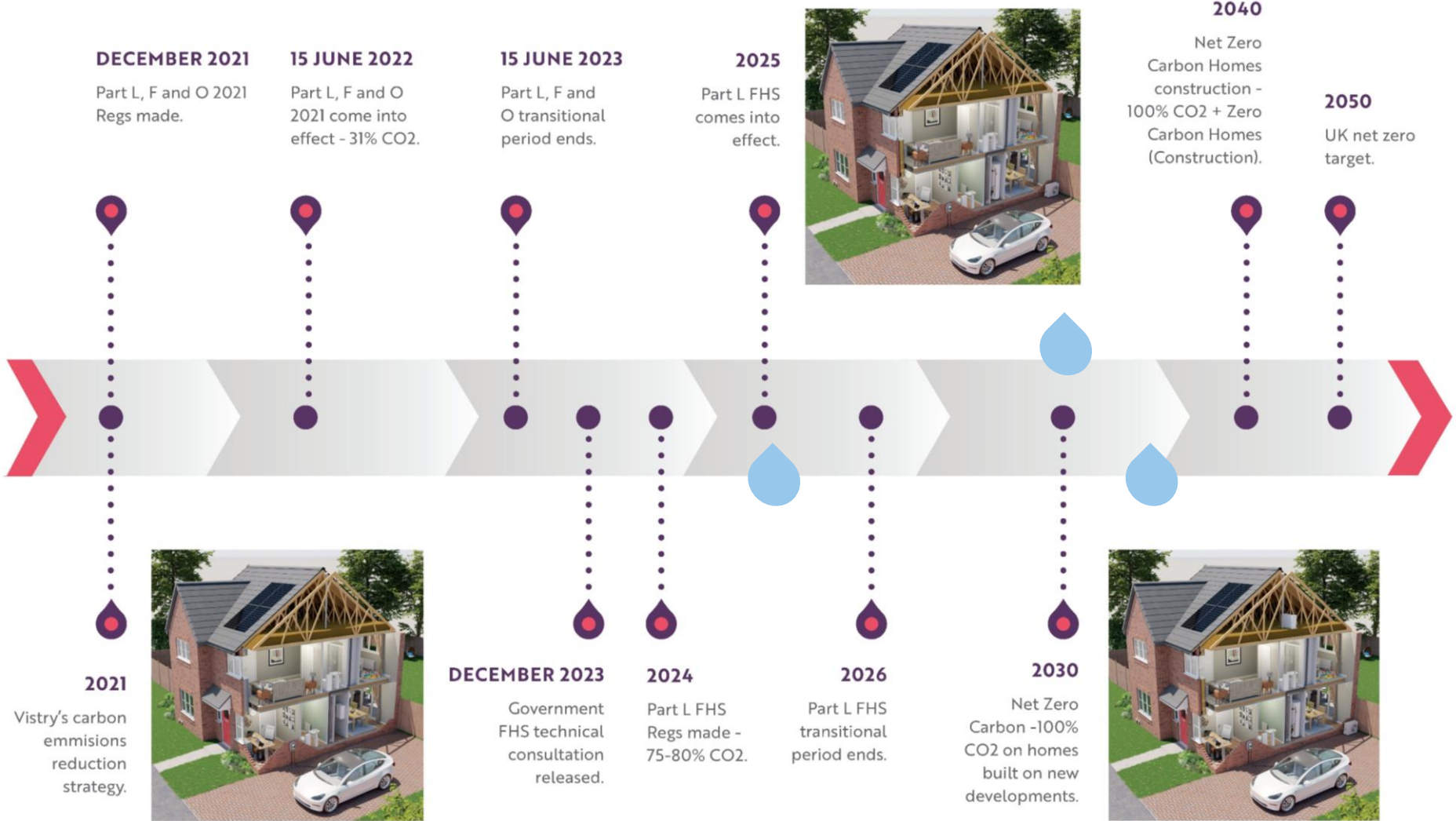
achieved through fittings approach and further innovation

**80 LPPPD**

in water stressed areas

To be determined in seriously water stressed areas to enable sustainable growth

# Meeting FHS and beyond



1. Learn lessons at scale
2. Collaborate
3. Innovate

# 1. Learning lessons: Delivering FHS & water efficiency at scale early



1

**Net Zero Carbon Homes (regulated energy)**

**Site:** Europa Way Triangle, Leamington Spa

**Region:** South West Midlands

**Number of Units:** 54



2

**Net Zero Carbon Homes (regulated energy)**

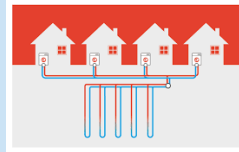
**Site:** Kenilworth

**Region:** South West Midlands

**Number of Units:** 310

3

**District GSHPs**



**Site:** Romney House, Bristol

**Region:** Bristol North East



4

**Zero carbon ready homes**

**Site:** Tolgus Farm, Redruth

**Region:** South West

**Number of Units:** 185



5

**AECB Design (Passivhaus lite)**

**Site:** Parcel 6 North Whiteley

**Region:** Southern

**Number of Units:** 54

**Client:** Winchester City Council



# Learning lessons: Delivering FHS & water efficiency at scale early



Part G calcs – 100l					
Water Fitting	Unit of Measure	Capacity/ Flow Rate	Use Factor	Fixed Use l/p/d	l/p/d
WC	Full Flush Litres	4	1.46		5.84
	Part Flush Litres	2.6	2.96		7.696
Shower*	Flow Rate (l/m)	6	4.37		26.22
Bath	Capacity to Overflow	181	0.11		19.91
Basin Taps	Flow Rate (l/m)	5	1.58	1.58	9.48
Sink Taps	Flow Rate (l/m)	6	0.44	10.36	13.00
Dishwasher	Litres/Place Setting	1.25	3.6		4.50
Washing Machine	Litres/Kg	8.17	2.1		17.157
Total Calculated Use					103.80
Normalisation Factor		0.91			94.46
External Water Use					5
Total Consumption					99.5

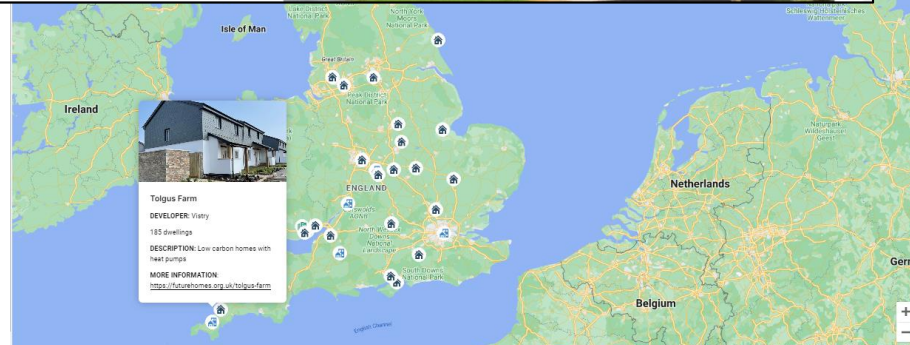
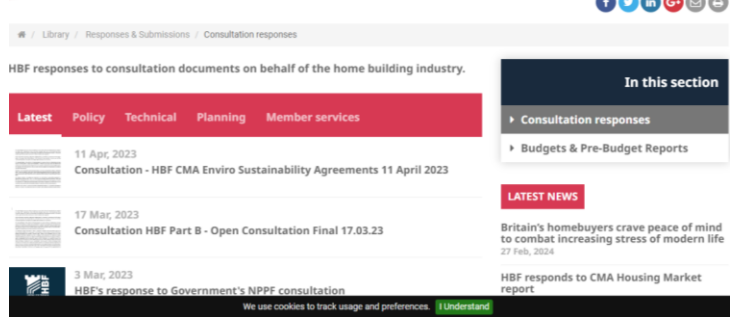
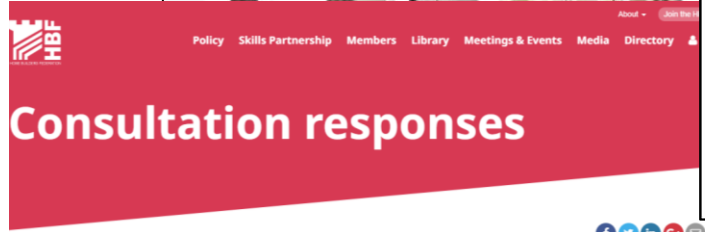
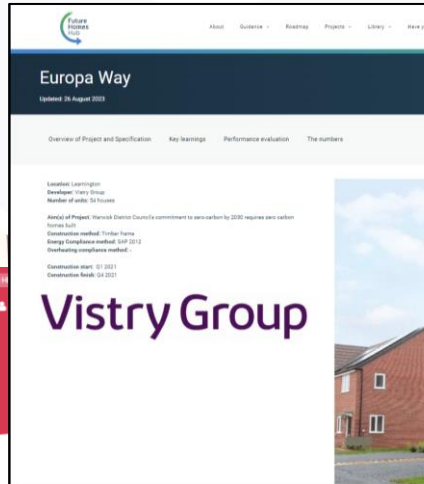
# 2. Collaborate

- Sit on multiple Future Homes Hub working groups
- Contributed to the FHH low carbon homes trial map to share our learnings
- Feed into HBF working groups and consultation responses
- Sit on wider industry steering committees



## Ready for Zero

Evidence to inform the 2025 Future Homes Standard



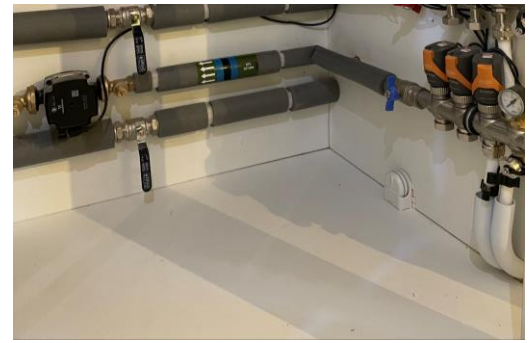
### 3. Innovate: Vistry Innovation Centre (VIC)

- Launched 1<sup>st</sup> February
- Showcases timber frame construction
- Demonstrates our solutions for Part L 2021 & possibilities to meet FHS
- Looks at innovative ways to meet net zero by 2030
- Explores themes from water efficiency, electric heating, smart homes & more

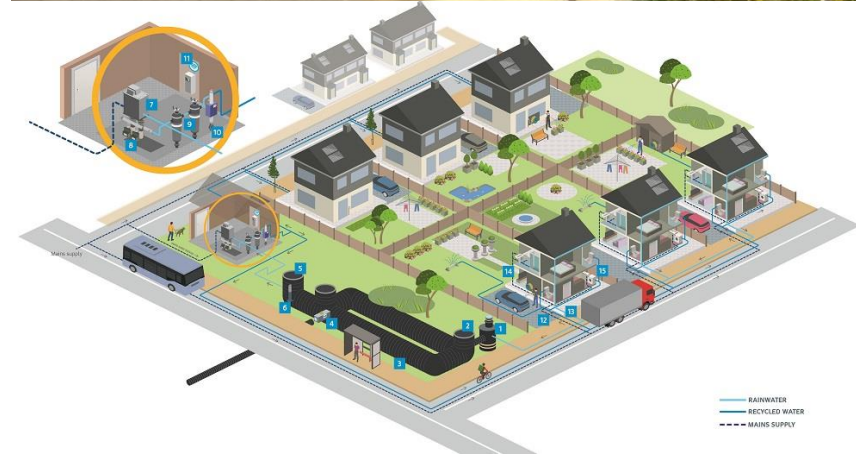
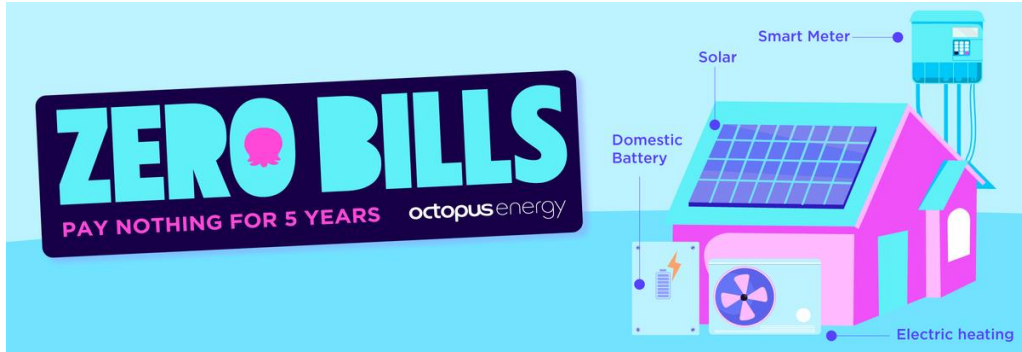




## VISTRY INNOVATION CENTRE



# 3. Innovate: Assessment and Trials



# Moving forward



- Roll out key products and solutions explored in the VIC
- Carefully controlled innovation trials across the business
- Vistry to lead on solutions to address skills shortage, climate change and resilience, and housing shortage
- Work with more closely with key partners on innovations
- Create the Vistry Innovation Portal (VIP)

Thank you

Vistry Group